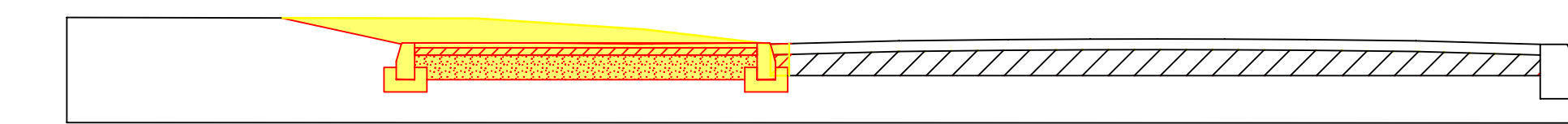
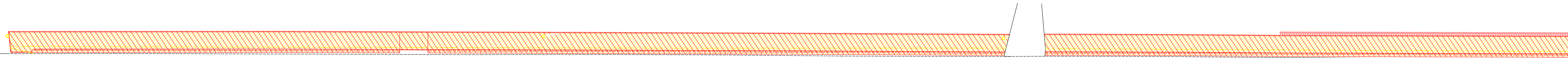
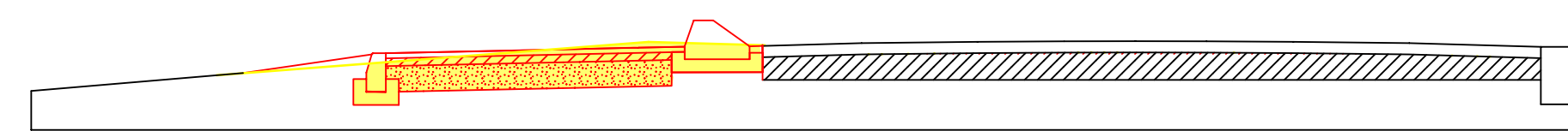


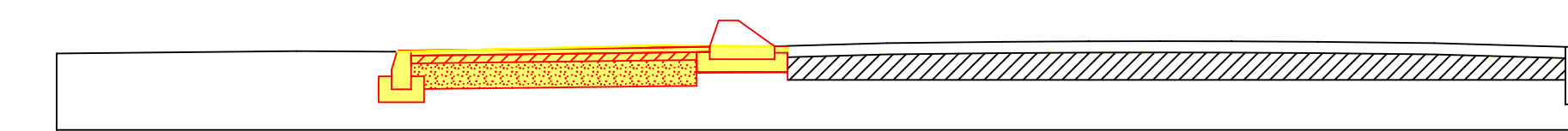
scala 1:200



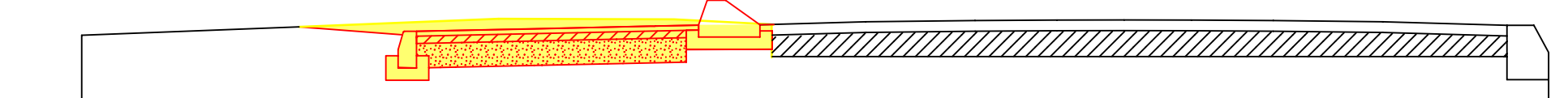
SEZ. 1



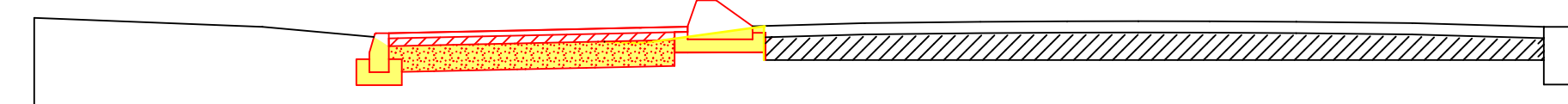
SEZ. 3



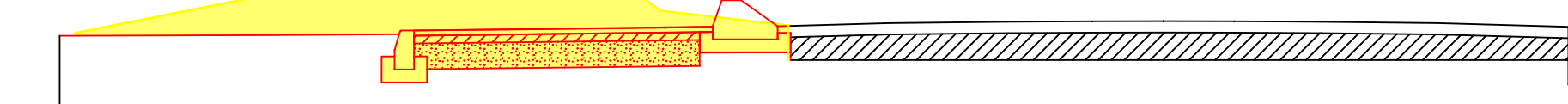
SEZ. 6



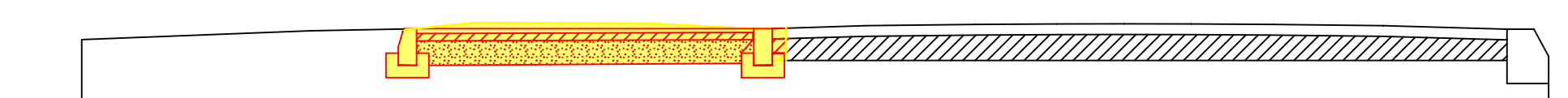
SEZ. 2



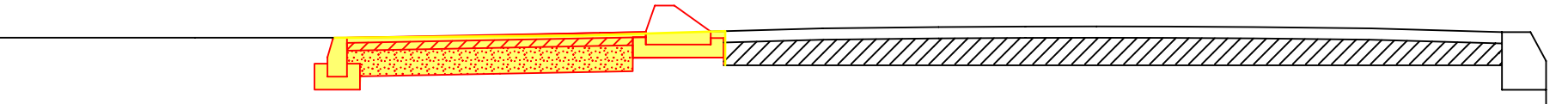
SEZ. 4



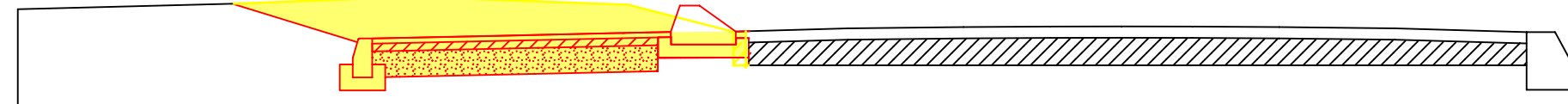
SEZ. 7



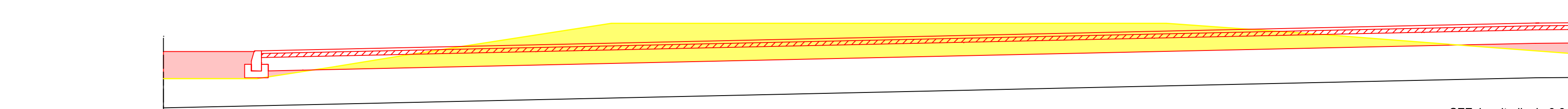
SEZ. acc. A



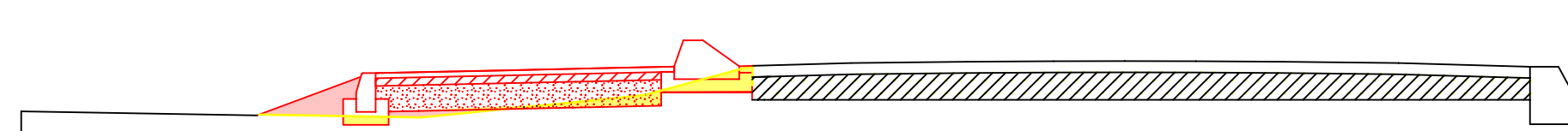
SEZ. 5



SEZ. 8



SEZ. longitudinale 6-8



SEZ. 9

scala 1:50

COMUNE DI FOSDINOVO
PROVINCIA DI MASSA CARRARA

REALIZZAZIONE DI PERCORSO CICLOPEDONALE
IN LOCALITA' CANIPAROLA

PROGETTO DEFINITIVO

Tecnici incaricati: Arch. Elisabetta Clariond
Arch. Elisabetta Scappazoni

Responsabile del procedimento:
Arch. Paolo Pavoni

Giugno 2018

Tavola

3a

Raffronto
Planimetria e sezioni